

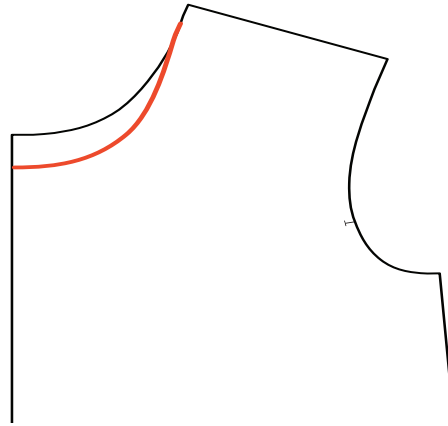


Threadbear Garments

Fabric | Harts Fabric

1. SIZE UP

- Optional based on preferred fit.

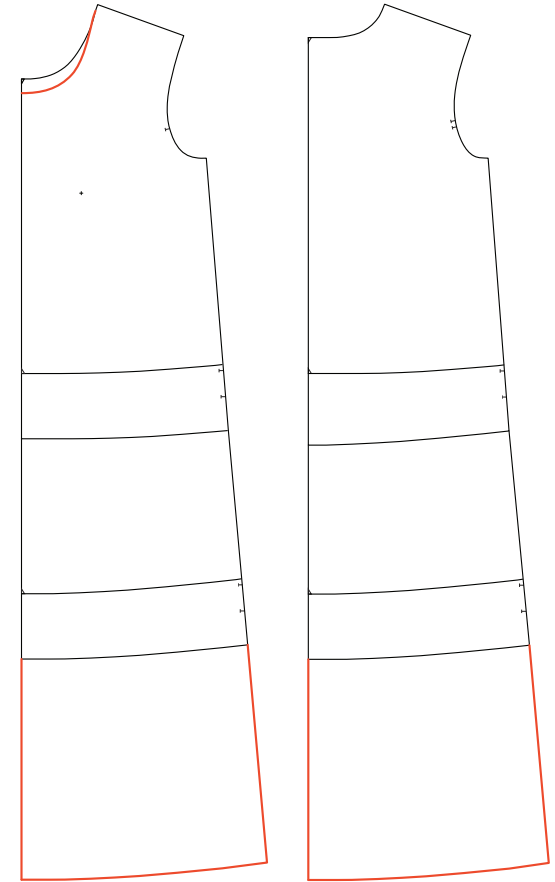


2. LOWER NECKLINE

- Lower the center front neckline 2" (5 cm) or desired amount.
- Re-draw neckline curve, keeping the center front corner square.

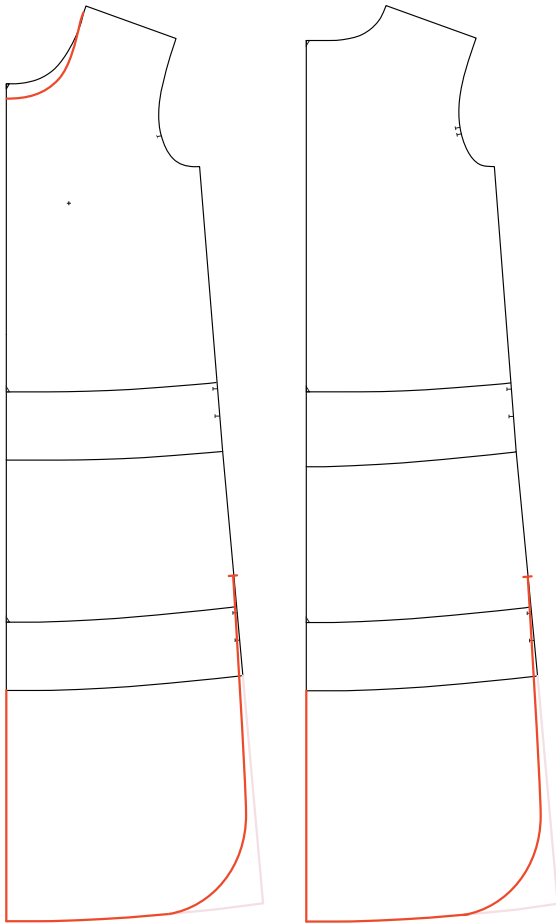
3. DRAFT NEW NECKBAND AT 91% RATIO.

- Measure the new neckline (front and back) at the sew line.
- Multiply the new neckline by .91 and add .75" (2 cm) for seam allowance.



4. ADD LENGTH

- Leslie added 15" (38 cm) based on a height of 5'9".



6. ADD WAIST TIES

- Leslie's waist ties are 1.5" (4 cm) x width of the fabric 61" (155 cm).
- Sew right sides together to make a tube.
- Cut tubes in half and hem one side.
- Insert the raw edges of the ties into the side seams at your waist.



5. ADD SLIT & CURVE HEM

- Decide length of slit.
- Curve hem.