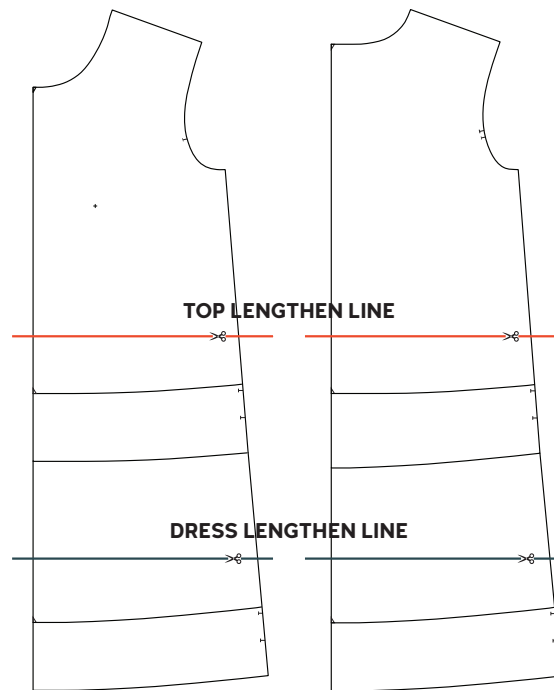




MEGMADE Sewing
Fabric | Harts Fabric



LENGTHEN BODICE

Add about 2" (5 cm) to the overall length of the Top or Dress.:

- Cut the pattern horizontally at the indicated line.
- Add paper and add 2" (5 cm) or the amount desired.
- Re-draw the side seams.

CURVE FRONT HEM

Add 1.5" (4 cm) to the center front of the tee, curving up to meet the original length on the side seam:

- Lower the center front by 1.5" (4 cm).
- Re-draw the hem to meet the original side seams.