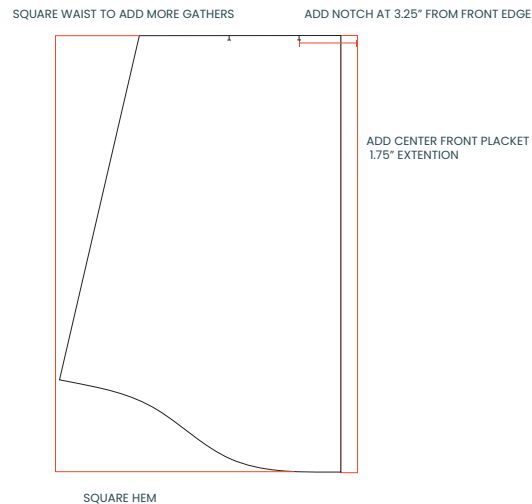




Rachael Anne Allison

1. PATTERN ADJUSTMENTS

- When cutting, add 1.75" to the center front. This extension matches the width of the bodice facing.
- Add a notch at the waistline 3.25" from the cut edge. This is where you will start and stop the skirt gathering.
- Optional: square waist to add more gathers.
- Square off the hem of the skirt.
- Square off the waist and hem of the back skirt too.



2. BODICE CONSTRUCTION

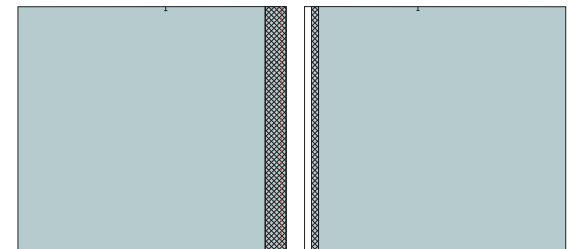
- Construct the Fringe bodice as described in the original sewing instructions. After step 9 (when you understitch the facing), sew the bodice side seams.
- You can continue to add the sleeves.
- Set aside until you sew the skirt.

3. SKIRT CONSTRUCTION

- Remember to cut 2 front skirt pieces (do not cut on the fold).
- Cut a 1.75" wide strip of interfacing the length of your skirt and add it to the wrong side of the center front of your skirt.
- Stitch a fold guide at 1/4". Press the edge, wrong sides together. Unfold. Alternatively, you can overlock this edge instead.

ADD CENTER FRONT FUSIBLE TO THE WRONG SIDE OF THE SKIRT FRONT PIECES

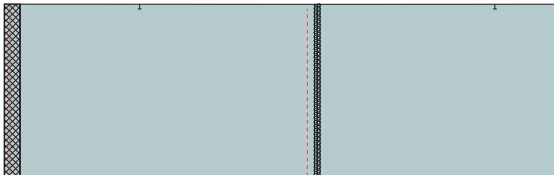
STITCH A FOLD GUIDE AT 1/4". PRESS THE EDGE, WRONG SIDES TOGETHER. UNFOLD.



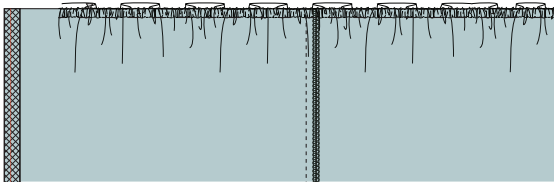
4. SKIRT CONSTRUCTION (CONTINUED)

- Sew the skirt side seams.
- Gather the skirt waistline starting at 3.25" from each cut edge (where you added a notch).

SEW SIDE SEAMS, FINISH AND PRESS



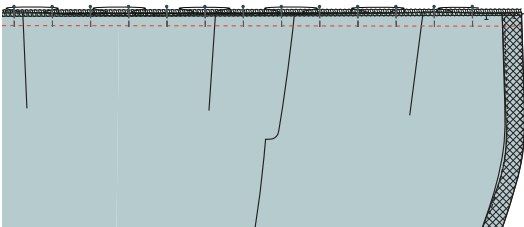
GATHER WAISTLINE



5. ATTACH BODICE TO SKIRT

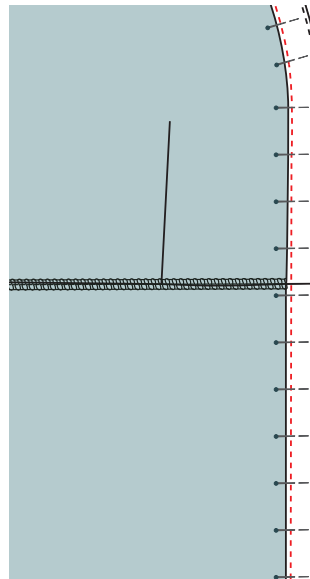
- With right sides together, pin all the way around, matching the center back, side seams, and placket seams on skirt and bodice.
- Sew the waistline and finish the seam. Press the seam up towards the bodice.

ATTACH BODICE TO SKIRT



6. FINISH THE BODICE FACING AND SKIRT PLACKET:

- Press the bodice facing/skirt placket back (wrong sides together) at the seam (or fusible edge).
- Pin the facing/placket in place. You can tuck under the previously folded edge 1/4" or leave the overlocked edge exposed.
- Edgestitch in place.



FOLD BACK BODICE FACING
AND SKIRT PLACKET



Rachael Anne Allison